

Installing JAlbum in a Linux Operating System

Description :

This document will explain the steps required to install the photo album generator application JAlbum into a Linux operating system. You may have to modify some of the commands and protocols shown below to match the equivalent in the specific Linux Distribution you are installing the application into.

Preparation:

Make sure you have Java V1.5 Virtual Machine (or later installed on the Linux system). Do not proceed until you have accomplished this.

Download the linux version of the application. The url is: <http://jalbum.net/software/download/>

Installation:

Create a directory to contain the application and the associated files and folders. It is recommended that this be placed in /usr/share.

```
$sudo mkdir /usr/share/jalbum
```

After the folder has been created, move the installation file for Jalbum over to the /usr/share/jalbum folder. After the file has been moved to the folder, in the terminal mode change directories to the /usr/share/jalbum

```
$ cd /usr/share/jalbum
```

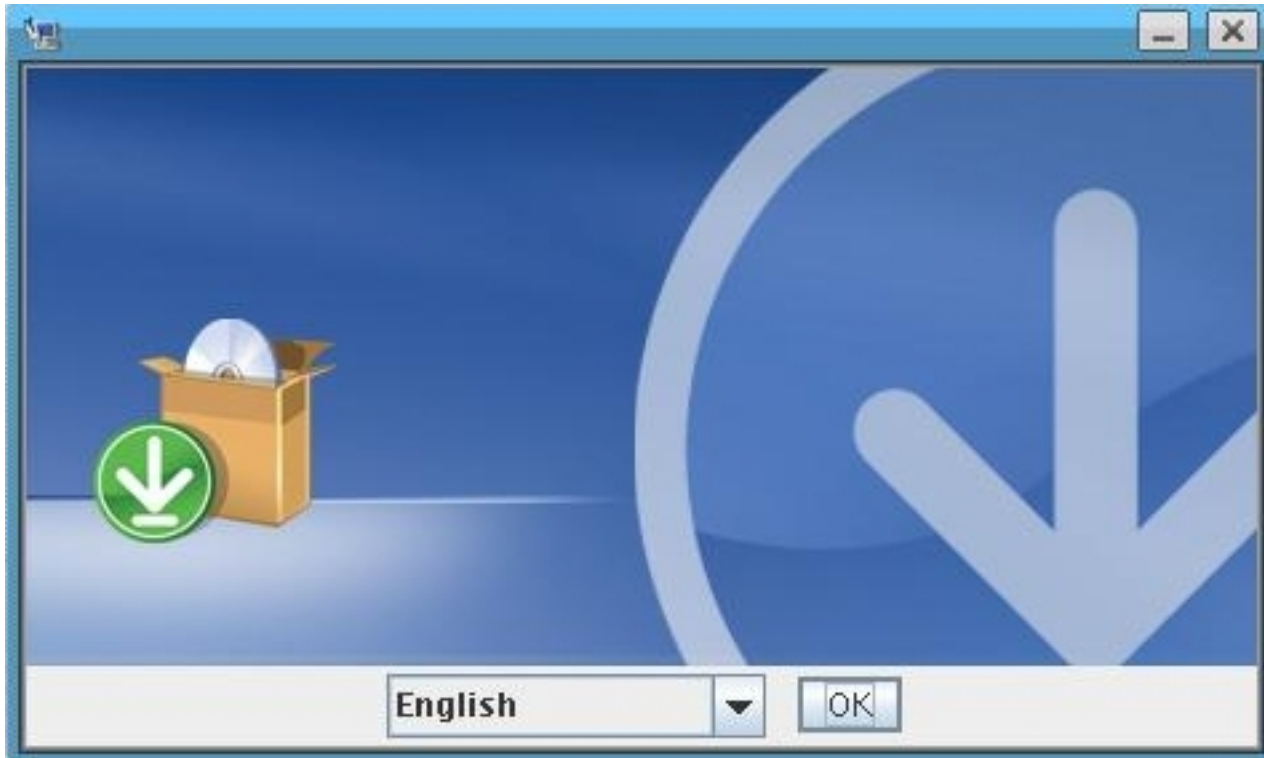
Launch the installation program.

```
$ sh ./Jalbuminstall.bin
```

JAlbum Installation on Linux Operating System

If everything is in order, the installer should launch.

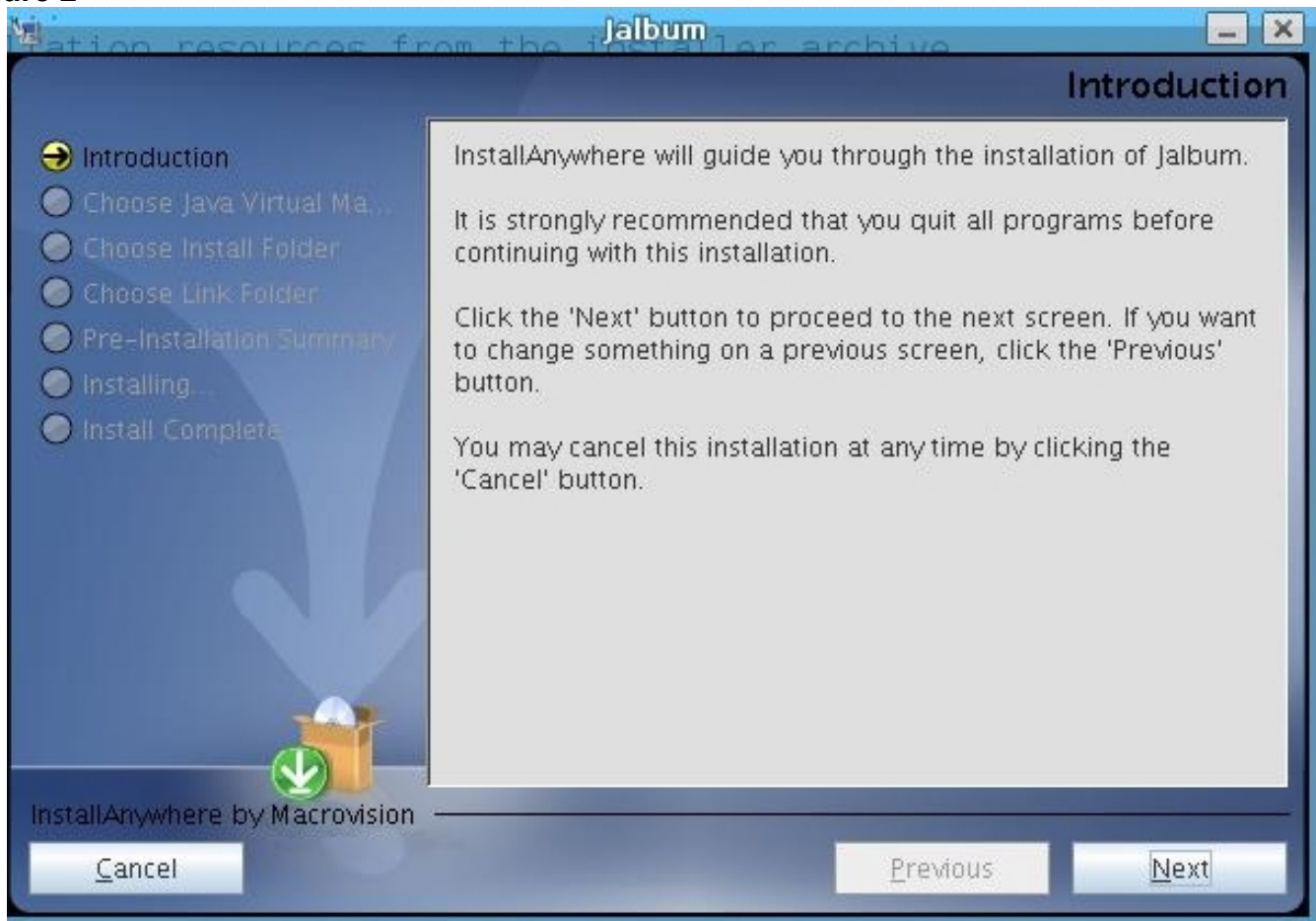
Figure 1



If need be modify the language via the pull-down and click <OK>.

JAlbum Installation on Linux Operating System

Figure 2



JAlbum Installation on Linux Operating System

It is recommended that you use the “Choose Another...” option. If not, the installer will do an extensive search of the /home directory in an attempt to locate the Java 1.5 run time application.

Figure 3



JAlbum Installation on Linux Operating System

Using the file selector, navigate to the `/usr/bin/java` directory. The installer should locate the default Java application. Select that application and click the “Next” button.

Figure 4



JAlbum Installation on Linux Operating System

The next step involves selecting a location for the installed application. As we have previously setup the /usr/share/jalbum location, select this folder as the destination for the application.

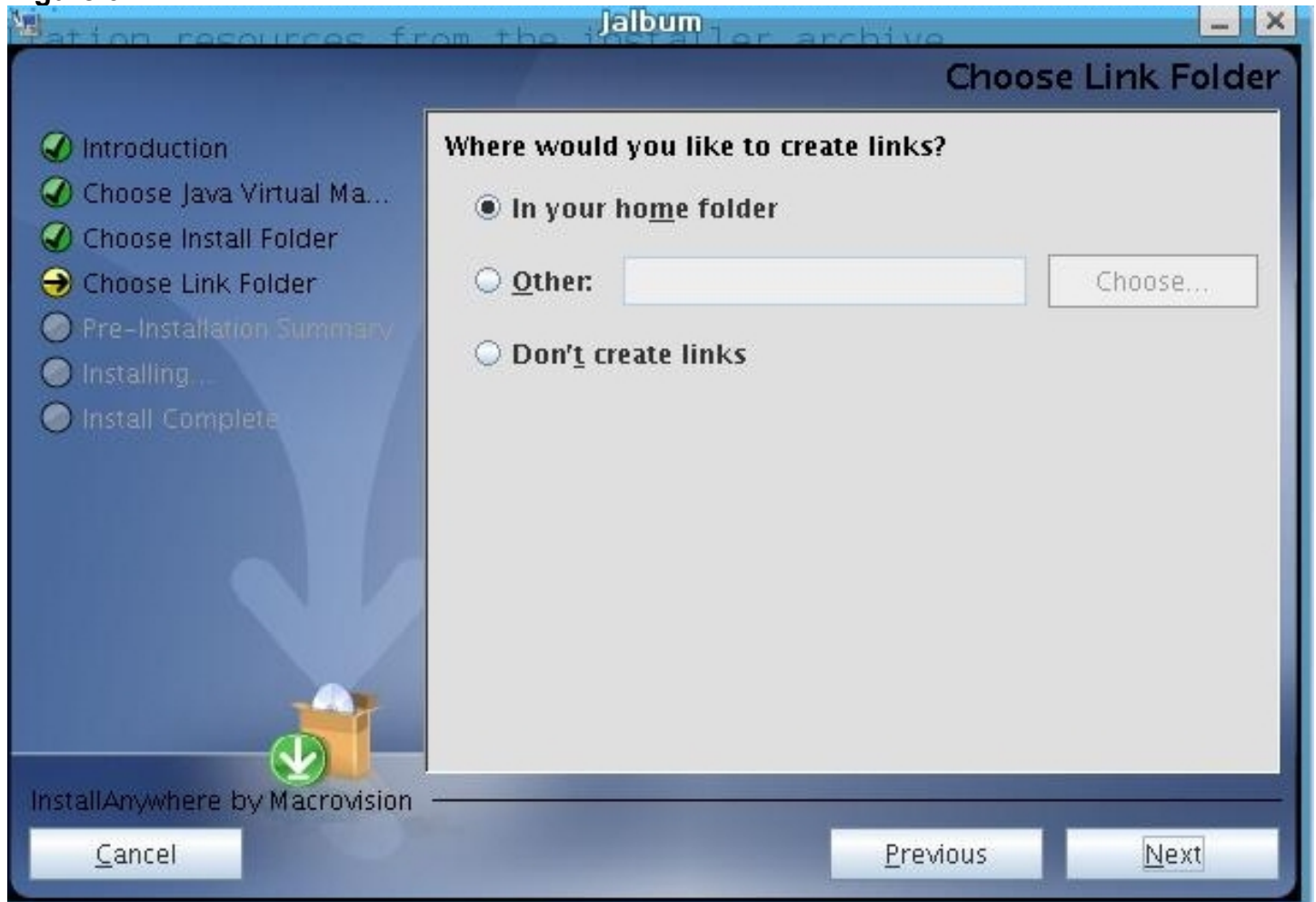
Figure 5



JAlbum Installation on Linux Operating System

The next step requires you to identify the location for the links to the run time application. It is recommended that the default setting of the home folder be used. This will minimize any problems with respect to folder permissions when trying to run the application.

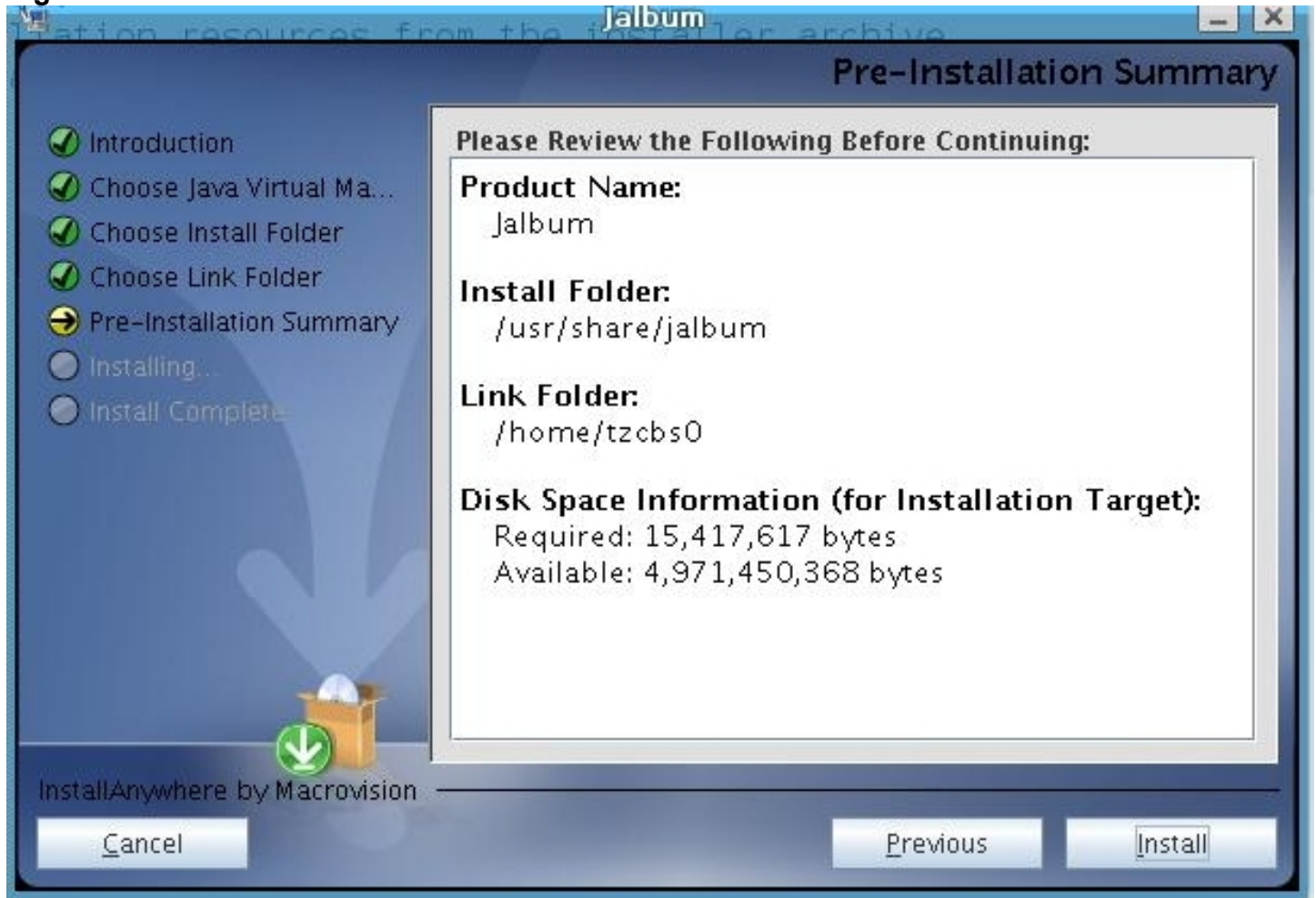
Figure 6



JAlbum Installation on Linux Operating System

Figure 7 shows the final pre-installation verification. If everything is order, click the “Install” button.

Figure 7



JAlbum Installation on Linux Operating System

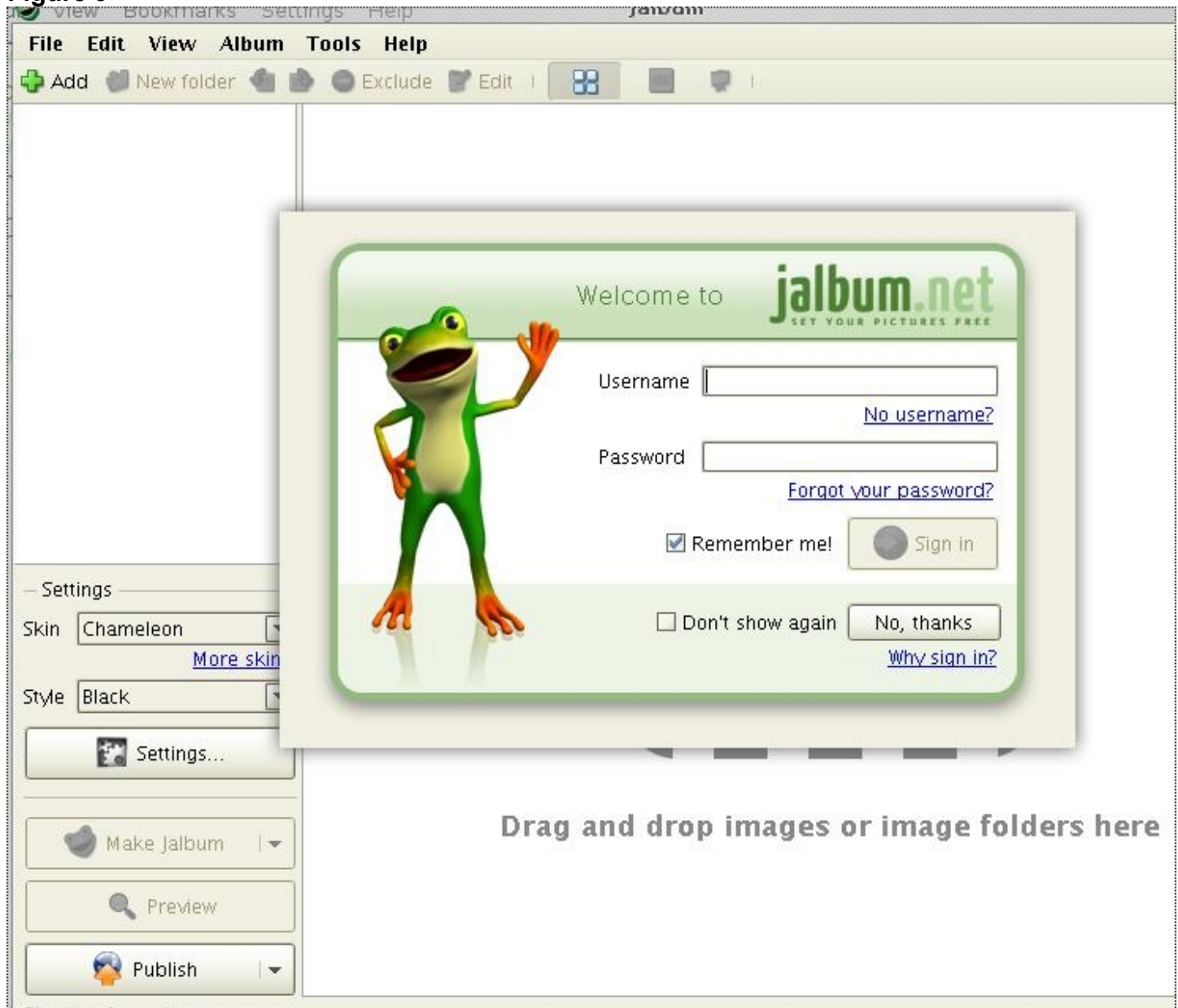
Figure 8



JAlbum Installation on Linux Operating System

When the installation has successfully completed, the application should launch.

Figure 9



JAlbum Installation on Linux Operating System

Running the Application

The application can be run in one of two fashions. In the first situation, using the file browser for the Linux Operating System, navigate to the /home folder. Double click on the Jalbum shortcut icon. This will launch the application.

The second method is to install the Jalbum into the desktop menu system. Since there is such a wide variation on how to accomplish this across the various Linux distributions and desktop types, consult with your specific distro provider for specifics.